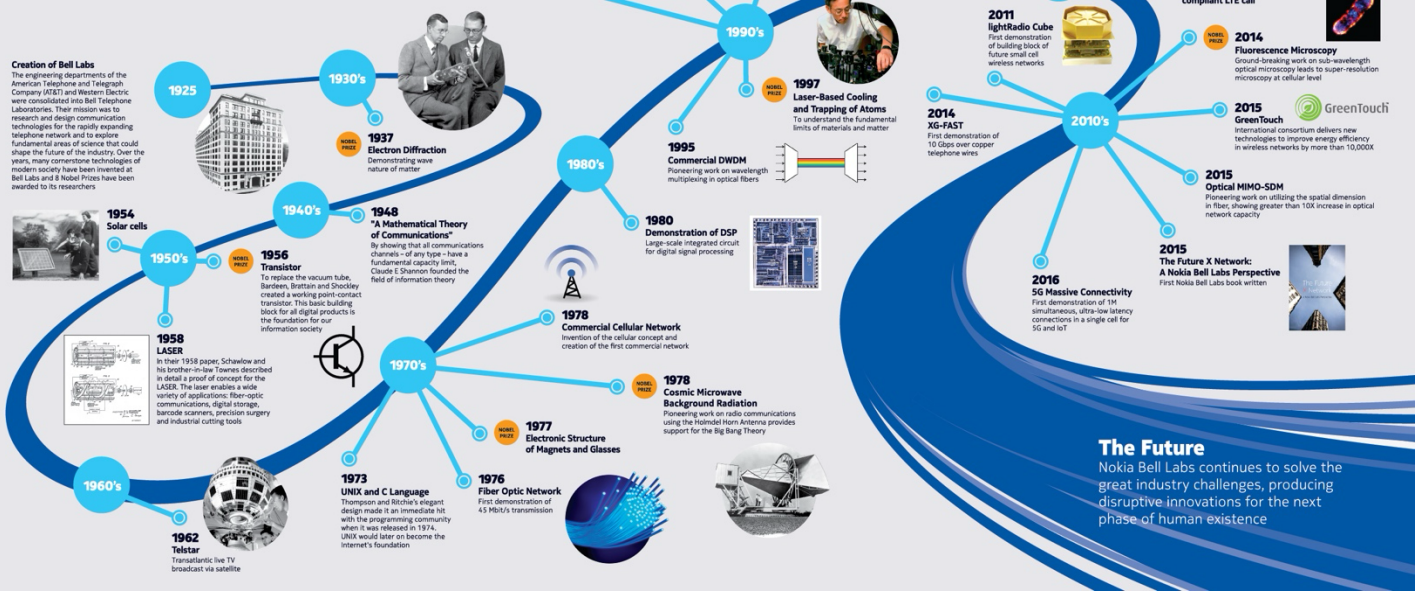


Inventing the Future X Network



SUMMER INTERNSHIPS 2025

Social and Responsible AI, Nokia Bell Labs, Cambridge

The Social and Responsible AI team at Bell Labs Cambridge (UK) welcomes applications from **outstanding PhD students** (ideally, final-year PhD students). Internships are in the summer, typically between the **beginning of June** and the **end of August**. Salary is competitive.

Nokia and Bell Labs

Nokia is a global leader in the technologies that connect people and things, and Bell Labs is a worldwide research and development community that focuses its efforts on key technologies. It is internationally renowned as the birthplace of modern information theory, the transistor, the laser and the UNIX operating system.

Bell Labs Cambridge

As part of the "Responsible AI" research area, the team addresses research questions at the intersection of multiple fields.

Main internship projects

- Can AI Incorporate Human Morality?** Skills (not all required): survey design, crowdsourcing, statistical analysis, machine learning, moral choice theory, algorithm design, knowledge representation, and Python or R programming.
- Exploring Approaches to Brainstorming Mitigations for AI Risks.** Skills (not all required): survey design, data collection, statistical analysis, machine learning, AI risk assessment, experimental design, and familiarity with Large Language Models.
- Building Tech Nobody Wants: Bridging the Gap Between Developers and Users.** Skills (not all required): survey design, data collection, statistical analysis, experimental design, and ethical considerations in AI.
- Hidden Dangers of AI: How Systemic Risks Could Shake Our Society.** Skills (not all required): survey design, data collection, statistical analysis, risk analysis, machine learning, and data visualization.

How to apply

Please send your application material with the subject line "Internship 2025" to daniele.quercia@nokia-bell-labs.com by the **6th of January 2025**. This material should include your CV, one paragraph on how your current research fits one of the projects above, and a copy of a recent publication or an example of relevant work.